

Redford Hills

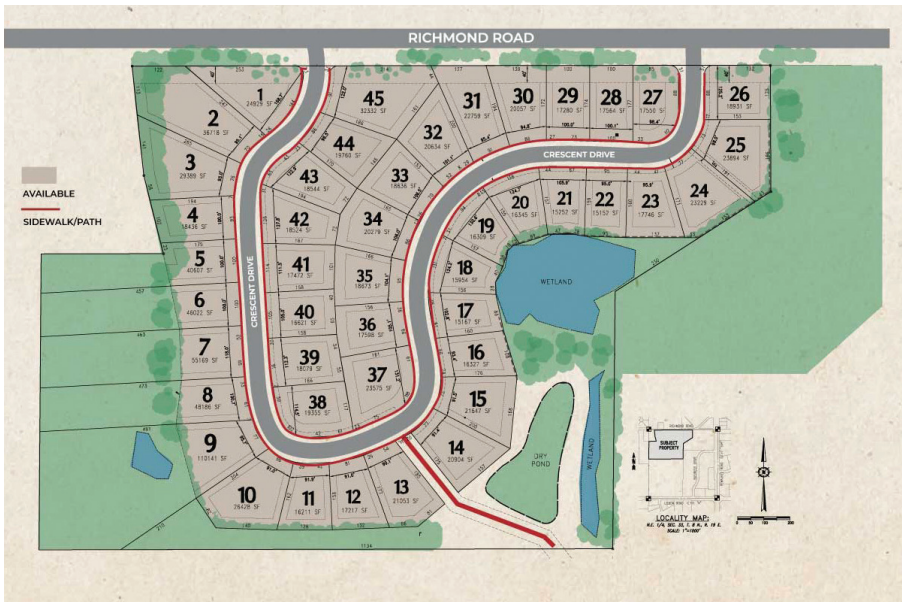
VILLAGE OF SUSSEX

About the Community

Build your home in the stunning subdivision that's already been named as a 2023 MBA Parade of Homes site. Located in the heart of Waukesha County's Lake Country, the Redford Hills subdivision features many amenities that people look for when choosing a place to live. This carefully planned, architecturally controlled subdivision features 45 select single-family lots, with an abundance of homesites offering lower-level exposures.

The neighborhood is situated within the Village of Sussex in a beautiful setting. Rolling hills, open green space, tree lines, and wetland conservancy areas make Redford Hills the perfect setting for your new home. Sidewalks and walking trails, including a walking path connected to the adjacent business park, offer residents a safe place to stroll through the neighborhood. The Village of Sussex offers nearby recreation areas such as the Waukesha County Bugline Recreational Trail, The Splash Pad at Village Park, the Pauline Haass Public Library, and Sussex Civic Center. The neighborhood is also located in close proximity to the interstate, minutes away from many of the spectacular inland lakes, along with championship golf courses, local ski hills, state parks, fine dining, entertainment, and unique shopping.

Simply beautiful! Redford Hills is a carefully planned, architecturally controlled subdivision featuring 45 select single-family lots, with an abundance of homesites offering lower-level exposures.



Neighborhood Features

- Architecturally controlled
- 10+ Acres of open green space & tree preservations
- Sidewalks and walking paths
- Sanitary sewer & municipal water
- Arrowhead public schools

Directions

From I-94, take exit 294, WI-164 North/Pewaukee Rd. Then head West on Richmond Rd. The subdivision entrance is on the south side of Richmond Rd.

Information is deemed to be accurate and is subject to change without notice. Buyers are encouraged to review the recorded plat map and grading plans with their builder. Please call for current availability.



FOLLOW US ON:



allanbuilders.com 866-569-2500
victoryhomesofwisconsin.com 866-252-7100