



## The Seville II 2015 MBA Parade of Homes Model

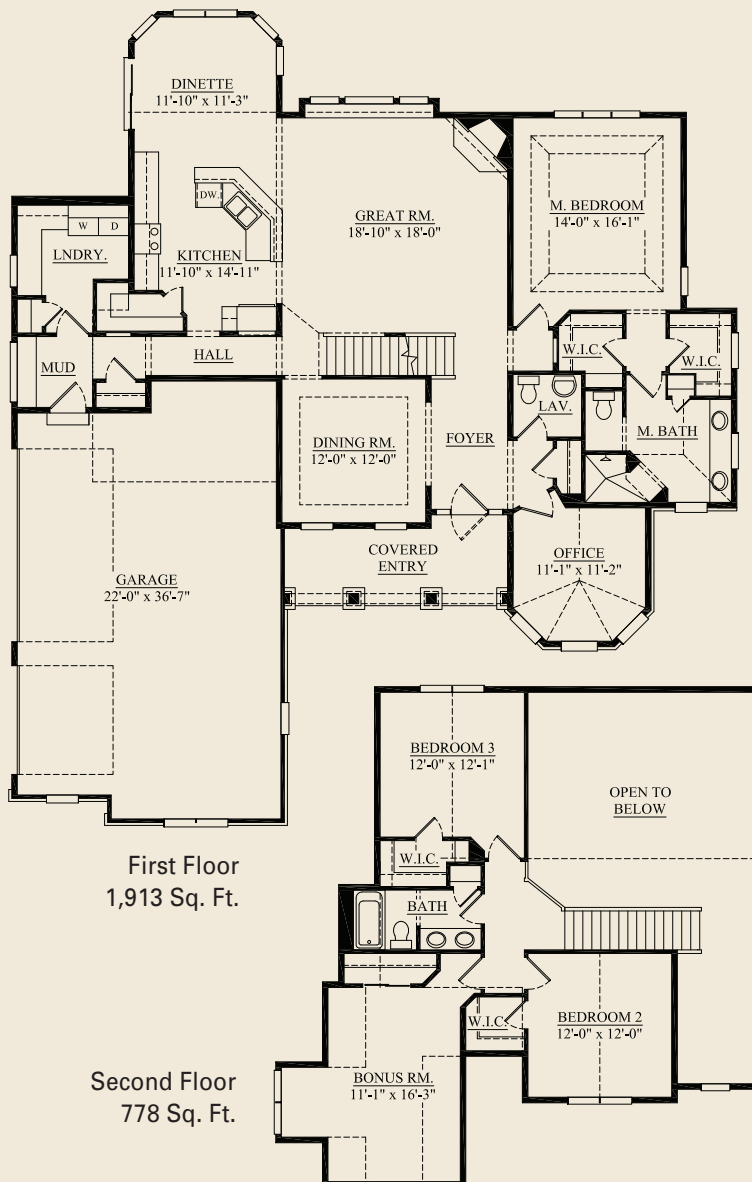
- 2,691 Sq. Ft.
- 4 Bedrooms, 2 1/2 baths
- First floor master suite with two walk-in closets
- 3 Car garage
- Formal dining room, 2-story great room
- Bonus room/4th bedroom

**Directions:** Hwy 45 to Silver Spring (Co Rd VV), head west. Turn right on Powell Rd. into Spencer's Pass West entrance. Model is on the left.

**Address:** W197 N5635 Powell Drive, Menomonee Falls Spencers Pass West Subdivision

**Model Hours - August 15 - September 7:** Weekends & Labor Day 11 am - 5 pm, Monday - Friday 4 - 8 pm.

**After September 7:** Saturday & Sunday 12 - 4 pm, or by appointment. Closed holiday weekends.



Standard elevation