

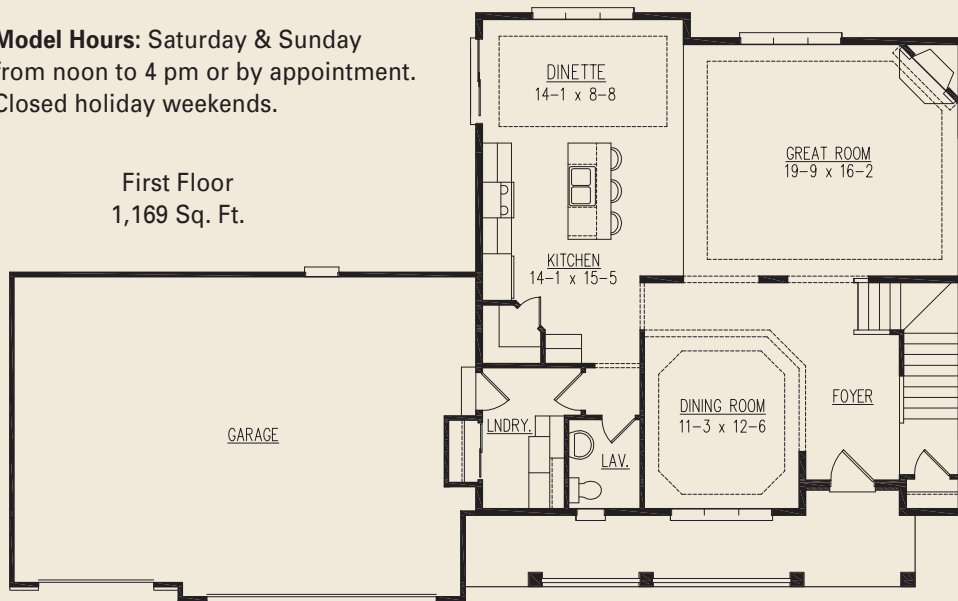


Shown with optional 3-car garage and manufactured stone

## The Fairfield Model

**Model Hours:** Saturday & Sunday  
from noon to 4 pm or by appointment.  
Closed holiday weekends.

First Floor  
1,169 Sq. Ft.

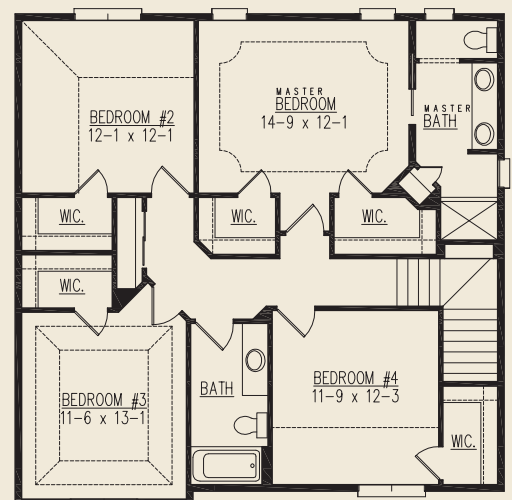


- 2,326 Sq. Ft.
- 4 bedrooms, 2 1/2 baths
- Kitchen with island snack bar and walk-in pantry
- 3 Car garage
- Formal dining room
- Great room with corner fireplace and wall of windows

**Directions:** Hwy 45, exit to Silver Spring Dr. Silver Spring West to Lilly Rd. North on Lilly to subdivision entrance. Right on Weyerhaven Dr. Left on Weyerhaven Ct. to model.

**Address:** W138 N6098 Weyerhaven Court, Menomonee Falls - Weyerhaven Subdivision

Second Floor  
1,157 Sq. Ft.



**allan**  
**builders, llc**  
Above and beyond your expectations.



Scan this code with  
your smart phone to  
browse the Fairfield's

**Photo Gallery**



Standard elevation